



National EMS Quality Alliance

EMS Compass 2.0

Safety-02 Measure Package

Disclaimer

EMS Performance Measures (Measures) and related data specifications developed by the National EMS Quality Alliance (NEMSQA) are intended to facilitate quality improvement activities by EMS professionals.

These measures are intended to assist EMS professionals in enhancing quality of care. These Measures are not clinical guidelines and do not establish a standard of medical care and have not been tested for all potential applications. NEMSQA encourages testing and evaluation of its Measures.

Measures are subject to review and may be revised or rescinded at any time by NEMSQA. The measures may not be altered without prior written approval from NEMSQA. The measures, while copyrighted, can be reproduced and distributed, without modification, for noncommercial purposes (e.g., use by health care providers in connection with their practices). Commercial use is defined as the sale, license, or distribution of the measures for commercial gain, or incorporation of the measures into a product or service that is sold, licensed, or distributed for commercial gain. Commercial uses of the measures require a license agreement between the user and NEMSQA. Neither NEMSQA nor its members shall be responsible for any use of the measures.

THESE MEASURES AND SPECIFICATIONS ARE PROVIDED “AS IS” WITHOUT WARRANTY OF ANY KIND.

©2019 National EMS Quality Alliance. All rights reserved.

Limited proprietary coding is contained in the measure specifications for convenience. Users of the proprietary coding sets should obtain all necessary licenses from the owners of these code sets. NEMSQA and its members disclaim all liability for use or accuracy of any Current Procedural Terminology (CPT®) or other coding contained in the specifications. ICD-10 copyright 2019 International Health Terminology Standards Development Organization.

CPT ® is a registered trademark of the American Medical Association and is copyright 2019. CPT® codes contained in the Measure specifications are copyright 2004-2019 American Medical Association

Safety-01 – Safety-02: Use of Lights and Sirens During Response/Transport

Safety-01 Safety-02 focus on the judicious use of lights and sirens during response to scene (Safety-01) and during patient transport (Safety-02). These measures may have the strongest evidence any measure in the EMS Compass Measure Set. There are strong guidelines and published studies that support the limited use of lights and sirens to protect not only the public but also EMS providers and patients from potential danger, as a consequence of lights and sirens use. The intent of these two measures is to determine how often EMS professionals are not using lights and sirens during response and transport.

The denominator for these measures is the total number of EMS responses/transports originating from a 911 request. The TEP decided not to add denominator exclusions to these measures, as even though there may be times were an EMS provider is responding to a high-risk emergency or transporting a high-acuity patient, the principle this measure was built upon is, *Above All Do No Harm*, and in order to uphold this principle and the intent of the measures, lights and sirens usage on all EMS responses and transports will be measured.

The numerator for both Safety-01 and Safety-02 was changed during the measure re-specification process. The original measures released as part of the candidate EMS Compass measure set were inverse measures, meaning lower measure scores indicated better quality. However, to eliminate confusion of the measure score interpretation, the TEP decided to change the measures to standard scoring, where higher scores will indicate better quality. This means the numerator for both Safety-01 and Safety-02 measure the process in which lights and sirens were **not** used.

The TEP understands the use of lights and sirens is often governed by state or local agency protocols. However, quality measures are built upon published guidance and rationale and the intent is to drive change. While individual EMS providers may still have to follow written protocols, NEMSQA and the TEP hopes that these quality measures will help drive change at the state and local levels, so protocols that are more in-line with the guidelines and evidence for lights and sirens use can be developed.

Safety-02: Use of Lights and Sirens During Transport

Measure Score Interpretation: For this measure, a higher score indicates better quality.

Measure Description	
Percentage of EMS transports originating from a 911 request during which lights and sirens were not used during patient transport.	
Measure Components	
Numerator Statement	EMS transports originating from a 911 request during which lights and sirens were not used.
Denominator Statement	All EMS transports originating from a 911 request.
Denominator Exclusions	None
Denominator Exceptions	None
Supporting Guidance & Other Evidence	<p>The following evidence statements are quoted verbatim from the referenced guidance:</p> <p>U.S. Department of Transportation, National Highway Traffic Safety Administration, Office of Emergency Medical Services: Lights and Siren Use by Emergency Medical Services (EMS) Above All Do No Harm:¹</p> <p>Recommendations for EMS Vehicle Operators:</p> <ul style="list-style-type: none"> • The driver is responsible for the mode of response to the scene based upon dispatch category, information available from dispatcher, and agency policy • The EMS provider, with the highest level of training, caring for the patient should direct whether or not L&S are used during transport based upon the patient’s medical condition and potential benefit of time saved with L&S transport. • L&S merely request the right of way from other drivers, but neither emergency warning lights nor siren are very effective. Do not assume that your vehicle has been seen by other drivers, and always proceed with caution and due regard. • Consider the following when driving an EMS vehicle:

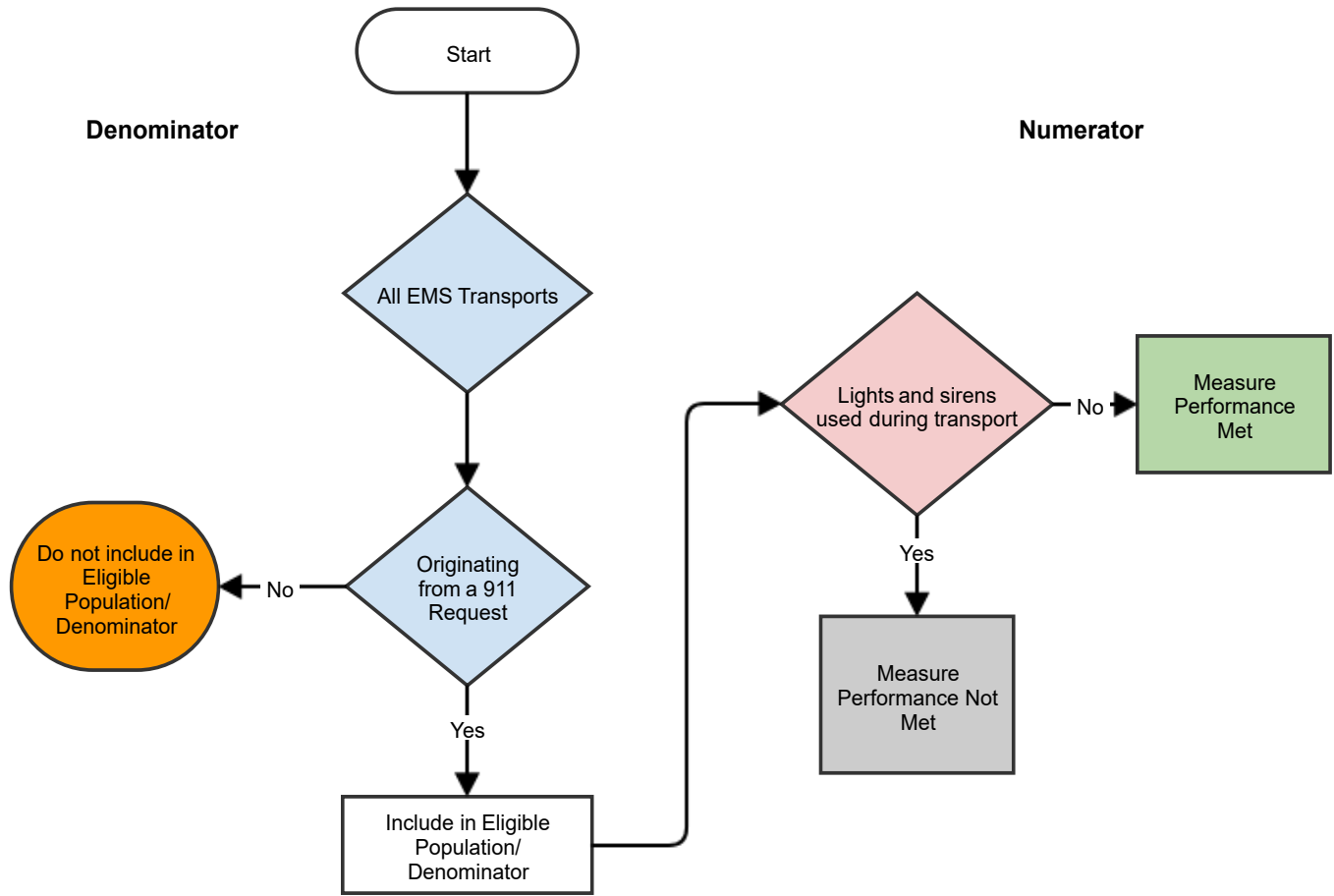
- Automatic daytime running lights or manual headlights increase vehicle visibility and should be on at all times when vehicle is moving
- Both L&S should be used when exercising moving privileges (e.g. traveling through a red traffic signal or in travel lanes that oppose normal traffic). Likewise, if the driver does not intend to exercise these privileges, neither lights nor siren should be used during the response or transport. Traffic is confused by an EMS vehicle that approaches an e signal to turn green if the traffic has given the right of way.
- EMS vehicle operators (assisted by EMS provider passengers) should ensure eye contact with other drivers and clear intersections before proceeding through intersections against a red traffic signal or stop sign.
- EMS vehicle drivers should primarily use a combination of wail and yelp when “requesting right-of-way” with a siren. High-low and air horns are less effective siren modes.
- EMS agencies and EMS vehicle operators should avoid continuous use of siren during L&S response or transport and should limit the siren use when needed to “request right-of-way” or when exercising privileges only permitted by emergency vehicles with L&S. Using sirens when travelling at highway speeds with traffic or when traveling unimpeded without exercising emergency vehicle privileges may impede crucial communication related to the response or patient care.
- Avoid flashing white lights after dark, as these may blind oncoming drivers.
- Do not exceed the posted speed limit in EMS vehicles (some experts suggest not exceeding the speed limit by more than 10 mph).
- Drivers should have the mindset that L&S use is only asking permission of other drivers – never assume that permission will be granted.
- Come to a “full stop” at red traffic signals or stop signs before proceeding, when using L&S.
- Limit speed to less than 20 mph when traveling in a lane opposing the normal flow of traffic.

- Downgrade L&S use if not indicated after more information becomes available during response or transport.
- L&S are not indicated if ALS is not indicated.
- L&S use is a medical treatment that should be used only when indicated.
- Consider specific approach to crossing intersections during EMS vehicle L&S driving (From Ambulance Insurance Services, Inc. Sample Intersection Crossing Policy).
 - Crossing on Green – slow down, look all 3 directions, proceed with caution.
 - Crossing on Red – come to complete stop, make eye contact with drivers of another vehicles, wait for partner to communicate all clear, wait 2 seconds, proceed with caution.
 - Making right or left turns across stopped vehicle – come to complete stop next to vehicle, establish eye contact via partner or self, wait for partner to tell you all clear, be aware of vehicles from behind, proceed with caution.
 - Other – use yelp siren mode, use headlights hi-lo beam, be patient.
 - Other – avoid passing on the right unless it is the last resort.
 - Other – avoid traveling in opposing traffic unless you are certain traffic is clear. If you must, use extreme caution and stay to your far right.
- When “blocking the right-of-way” at a scene, consider altering the lighting pattern of the vehicle with the goal of drawing attention without blinding or overwhelming other drivers.
 - Do not use headlights or flashing white lights.
 - Consider decreasing the number and intensity of flashing lights overall.
 - Consider using scene floodlights to illuminate the scene and areas around the vehicle.
 - Consider turning off distracting flashing emergency lights if the EMS vehicle is not the primary vehicle “blocking the right-of-way” for traffic.

	Consider using amber warning lights to warn of hazards ahead or amber directional signals to direct traffic away from hazards.
Measure Importance	
Rationale	<p>When the National Highway Traffic Safety Administration reviewed two decades of data in 2005, it was found that there is an average of 4,500 MVC's involving ambulances each year, and of these crashes, an average of 34% involve injuries and 33 people are killed.ⁱⁱ</p> <p>A 2005 study of motor vehicle crashes in Pennsylvania found that ambulances were more likely to be in crashes at intersections and traffic signals than other vehicles of similar size. In addition to the increased MVC rate for ambulances, the study found that MVC crashes involving ambulances typically involve more people and more injuries than MVCs among vehicles of similar size.ⁱⁱⁱ</p> <p>A 2018 study of trauma outcomes and prehospital transport time was unable to identify a correlation between increased prehospital transport times and 30-day mortality rates or hospital length of stay.^{iv}</p>
Opportunity for Improvement	A 2015 medical record review of pediatric transports found that of 490 RLS transports, 19.6% of them unnecessarily used lights and sirens. ^v
Measure Designation	
Measure purpose	<ul style="list-style-type: none"> • <input checked="" type="checkbox"/> Quality Improvement • <input checked="" type="checkbox"/> Accountability • <input type="checkbox"/> MOC
Type of measure	<ul style="list-style-type: none"> • <input checked="" type="checkbox"/> Process • <input type="checkbox"/> Outcome • <input type="checkbox"/> Structure • <input type="checkbox"/> Efficiency
National Quality Strategy/Priority/CMS Measure Domain	<ul style="list-style-type: none"> • <input type="checkbox"/> Clinical Process-Effectiveness • <input checked="" type="checkbox"/> Patient Safety • <input type="checkbox"/> Patient Experience • <input type="checkbox"/> Care Coordination • <input type="checkbox"/> Efficiency: Overuse • <input type="checkbox"/> Efficiency: Cost • <input type="checkbox"/> Population & Community Health
CMS Meaningful Measure Domain	<ul style="list-style-type: none"> • <input type="checkbox"/> Medication Management • <input type="checkbox"/> Admissions and Readmissions to Hospitals • <input type="checkbox"/> Transfer of Health Information and Interoperability • <input type="checkbox"/> Preventative Care • <input type="checkbox"/> Management of Chronic Conditions • <input type="checkbox"/> Prevention, Treatment, and Management of Mental Health

	<ul style="list-style-type: none"> • <input type="checkbox"/> Prevention and Treatment of Opioid and Substance • <input type="checkbox"/> Risk Adjusted Mortality • <input type="checkbox"/> Equity of Care • <input type="checkbox"/> Community Engagement • <input type="checkbox"/> Appropriate Use of Healthcare • <input type="checkbox"/> Patient-focused Episode of Care • <input type="checkbox"/> Risk-Adjusted Total Cost of Care • <input type="checkbox"/> Healthcare-associated infections • <input checked="" type="checkbox"/> Preventable Healthcare Harm • <input type="checkbox"/> Care is Personalized and Aligned with Patient’s Goals • <input type="checkbox"/> End of Life Care according to Preferences • <input type="checkbox"/> Patient’s Experience of Care • <input type="checkbox"/> Patient Reported Functional Outcomes
Level of measurement	<ul style="list-style-type: none"> • <input checked="" type="checkbox"/> Individual EMS Professional • <input checked="" type="checkbox"/> EMS Agency
Care setting	<ul style="list-style-type: none"> • <input checked="" type="checkbox"/> Pre-Hospital Care
Data source	<ul style="list-style-type: none"> • <input checked="" type="checkbox"/> Electronic Patient Care Record (eCPR) data • <input type="checkbox"/> Administrative Data/Claims (inpatient, outpatient or multiple-source claims) • <input checked="" type="checkbox"/> Paper medical record/Chart abstracted • <input checked="" type="checkbox"/> Registry

Clinical Quality Measure Flow for Safety-02 Use of Lights and Sirens During Transport



NEMESIS Pseudocode: Safety-02: Use of Lights and Sirens During Transport

Measure Components	
Numerator Pseudocode	Disposition.18 Additional Transport Mode Descriptors is 4218015 ("No Lights or Sirens)
Denominator Statement	All EMS transports originating from a 911 request.
Denominator Pseudocode	eResponse.05 Type of Service Requested is 2205001 ("911 Response (Scene)") and eDisposition.12 Incident/Patient Disposition is 4212033 ("Patient Treated, Transported by this EMS Unit")

ⁱ Kupas, D.F. (2017) Lights and Siren Use by Emergency Medical Services (EMS): Above All Do No Harm. U.S. Department of Transportation, *National Highway Traffic Safety Administration, Office of Emergency Medical Services*, 49-51.

ⁱⁱ Smith, N. (2005) A National Perspective on Ambulance Crashes and Safety, *EMS World*, 2015; 44(9): 91-94.

ⁱⁱⁱ Ray, A.F. & Kupas, D.F. (2005) Comparison of Crashes Involving Ambulances with Those of Similar-Sized Vehicles, *Prehospital Emergency Care*, 9:4, 412-415.

^{iv} Brown, E., Hideo, T., Bailey, P., Fatovich, D., Pereira, G., & Finn, J. (2018) Longer Prehospital Time was not Associated with Mortality in Major Trauma: A retrospective Cohort Study, *Prehospital Emergency Care*.

^v Burns, B., Hansen, ML, Valenzuela, S., Summers, C., Van Otterloo, J., Skarica, B., Warden, C., Guise, J.M. (2016) Unnecessary Use of Red Lights and Sirens in Pediatric Transport, *Prehospital Emergency Care*, May-Jun;20(3):354-61.